



WELCOME TO THE CHOOSE FRAMINGHAM NEWSLETTER



Choose Framingham Newsletter
May 31, 2019 - In This Issue:

Irving Street Park

**Framingham Is Open for Business
- 969 Concord Street**

Bose Day of Service

Coffee Pond Photography

Saxonville Open Studios





Business Profile: Coffee Pond

Photography & Yearbooks

Coffee Pond Photography & Yearbooks, headquartered in Framingham, has been offering school, senior, and family portraits for over 25 years. Coffee Pond's outstanding portrait quality, excellent customer service and affordability makes them a smart choice for your portrait photography needs. Choose Framingham caught up with Coffee Pond's President, Marc Stiller, to hear more about their business and their Speen Street location.



Irving Street Park

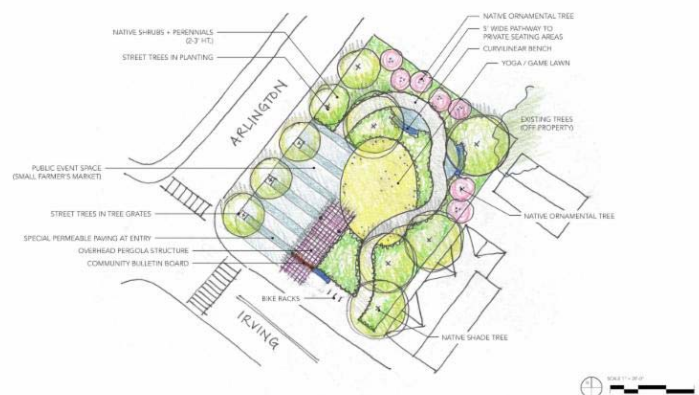
A much-needed neighborhood park and a boost for Downtown Framingham

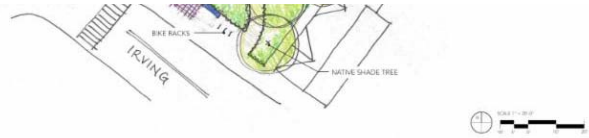
The City of Framingham is trying something different to bring amenities to its under-served south side. The City is partnering with the state's economic development finance agency, [MassDevelopment](#) and [Patronicity](#), a community crowdfunding platform, to build a new pocket park on the south side of Downtown. Dense development on the south side leaves few options for recreation for most residents and employees of nearby businesses. If the campaign raises \$50,000 by June 30, 2019, MassDevelopment will provide a further \$50,000, allowing the City to transform the vacant lot into a beautiful and functional green space.

Designed by and for the Community: In October 2018, the [Division of Community & Economic Development](#) and the [Department of Parks, Recreation & Cultural Affairs](#) hosted a public workshop to bring together neighborhood residents, employees, businesses, organizations, to roll up their sleeves and generate design alternatives for the new Irving Street Park.

This hands-on event included design exercises, a site visit, and group discussion of what was desirable and feasible for the 0.2-acre site. The session was facilitated by Christine Wilson, a professional landscape architect from [Copley Wolff Design Group](#), who synthesized the groups' ideas into a conceptual design. The proposed design calls for a flexible passive recreation space incorporating a walking path, open lawn, trees, shrubs, benches, a shade structure, and a small plaza. "A thriving downtown requires beautiful and vibrant public spaces for residents, visitors, and workers to enjoy," said Erika Oliver Jerram, Framingham's Deputy Director of Community and Economic Development. "South side residents want and need more green space and this park will be a great investment in our community."

Proposed concept plan:





Tell us more about Coffee Pond - what is your mission?

At Coffee Pond Photography & Yearbooks, we recognize that you only get ONE school picture each year that catches a child at the same moment, year after year, as they mature from kindergartener to high school graduate. It is our mission to chronicle each child's life from pre-school to adult hood through beautiful photos, outstanding service and a strong partnership with community schools.

Where did you come up with the name "Coffee Pond"?

Coffee Pond is a beautiful lake in Maine where I met the other company founder, Andrew Kessler. Andrew and I spent many fun-filled summers together at an overnight camp situated on the lake. The spirit of those summers lives on through the smiles and joy we see on the many faces of the children we photograph. From our humble beginnings in the basement of Andrew's childhood home in 1982, we now have clients throughout the Northeast and have established ourselves as an industry leaders.

What is your company culture like?

Our culture is really all about family. Our office staff of 17 people includes four sets of married couples and a set of siblings. We feel that treating our staff like family is the best way to keep them happy, which in turn keeps our clients happy. Our staff knows they can always leave early to go to a child's activity or appointment, and we know they will do whatever it takes to handle our clients' needs. Most of our staff have been with us for more than 15 years and have formed incredible relationships with the people they serve. It is an

On May 1, 2019, MassDevelopment and the civic crowdfunding platform Patronicity launched a new [Commonwealth Places campaign](#) with the City. "This park will be a welcome addition to all who live, work, or visit Framingham," said MassDevelopment President and CEO Lauren Liss. "In addition to activating a vacant lot, the park will serve as an inviting gateway to all the shops, restaurants, and amenities located downtown."

To learn more and donate to Framingham's Irving Street Park project, visit: www.patronicity.com/irvingstreetpark.

Framingham Is Open for Business - 969 Concord Street



We are pleased to report that the reconstruction of 969 Concord Street is now underway. In March 2017, an extensive fire gutted the entire building, taking furniture, equipment, and critical paperwork and displacing ten small businesses. Construction began in April 2019 and is on track for completion by December 2019. The new building containing class A, high quality retail, medical, and office space, consists of ten new units ranging from 1,185 sf to 1,970 sf, with plentiful parking for customers and employees. Located in Framingham's Golden Triangle, near Exit 13 off the MassPike, the new stores are visible from Route 126 (Concord Street), and offer quick access to Route 30, Route 9, and the Mass Turnpike.

incredibly close-knit, supportive group and even our dogs come to work!

Do you offer in studio photography as well as off-site?

While our focus is on-location photography for schools and the production of yearbooks, we also have a studio at our office. We work with many local companies taking head shots and the studio is perfect for family portraits.

What is next for Coffee Pond?

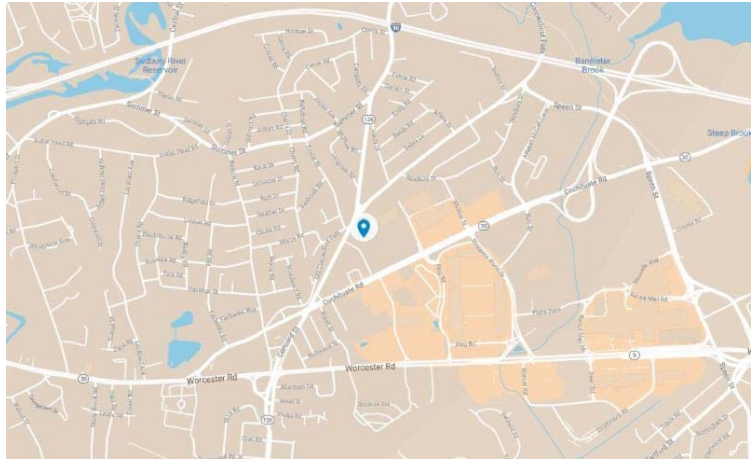
We continue to strive for improvement in every aspect of our business. We have many stakeholders and want to deliver the best possible experience for everyone we with whom we interact. With the implementation of our new Photography Advisory Panel and a refreshed Training and Orientation Program, this year in particular will have a lot of positive improvements.

Your building is located on Speen Street. Tell us what you like about your location and how you benefit from being in that location?

Our location gives us a huge competitive advantage. Our photography staff travels throughout New England and New York so being close to the Mass Pike really makes things easy. Additionally, we are off Route 9 and right in between 95 and 495, therefore able to attract employees from all over the state. We feel like all roads lead to our office.

In general, what do you like about being located in Framingham?

We looked for space in several towns in the area, and Framingham is definitely one of the more business-friendly cities. As a city, it provides great support for businesses with lots of restaurants and services, while still feeling like a small town.



The Brossi Brothers have turned a significant loss in to a new opportunity with fantastic exposure for prospective tenants at an ideal location.

For more information on leasing any of the prospective spaces, contact the listing broker, [Trish O'Neil](#).

Bose Gives

Day of Service



On May 10, [Bose](#), the Framingham-based company known for creating world-class audio products, gave back to our community during the 5th annual Bose Service Day. Mayor Yvonne Spicer, who spoke at the event kick-off at Bowditch field, commented on how the Bose Service day "has become a tradition in Framingham" and how the Bose employees' efforts "will improve our beautiful City and the lives of our residents."

Over 330 volunteers from Bose undertook 46 projects throughout the City in this record setting year. According to Jim Snyder,

How can people get in touch with you and learn more about Coffee Pond?

You can follow us on [Instagram](#). It is a great way to peak behind the curtain to see what it is like to "Swim in the Pond". People can always visit our [website](#) or [Facebook](#) page or send us an [email](#).

Is there anything you would like to add?

We are excited to part of the Framingham community. We work with many of the schools in the city and help support the YMCA and Framingham United Soccer. We are looking forward to further helping support Framingham and know that Framingham will do what it can to support us.



Saxonville Open Studios

The [Saxonville Mills Spring Open Studios](#) took place on May 4 and 5, where visitors could tour the spaces, talk with the artists, and buy original works. There were five different buildings in the Mills with participating artists. Stores in the Mills, like [Framed in Time](#), also participated. They offered their exceptional custom framing services along with unique

Director of Parks, Recreation and Cultural Affairs, the project highlights included "landscaping and painting at Loring Arena; landscaping at Cushing Park, both City Libraries, and the commuter lot along Waverley Street; landscaping for the National Lancers; Novel Engineering lessons at various City Schools; cleanups at a number of non-profits; and many more." The volunteers from Bose also assisted with food preparation at the Pearl Street Cupboard and Café and provided technical assistance at The Callahan Senior Center.

Elizabeth Cameron, Community Relations Manager at Bose, said "Bose is so grateful for our partnership with the City of Framingham for the annual day of service. The day brings together over 300 Bose employees and numerous organizations throughout the City for a day of giving back. Our partnership with the City allows us to connect with projects that work to beautify parks and paint new additions, right in our own backyard. We are thrilled to partner each year and continue to expand our reach year after year, with the help of the City." The volunteers from Bose provided the City with almost 2,000 hours of community service, completing a number of much needed maintenance and improvement projects. Jim Snyder also said, "The City and Parks Department are grateful for this continued partnership with Bose and thankful for their service to our community." We are pleased that this great company calls Framingham home.



handcrafted items by local artists being sold in their Artful Gift Gallery. In addition, the [Friends of Saxonville](#), whose mission is to educate the public about Saxonville, a historic neighborhood in Framingham sold bags, glasses, and more items that celebrate Saxonville.

The folks from [Framingham Makerspace](#) gave tours of their metal, welding, glass and woodworking shops and equipment, while [Kano](#) opened their doors to give people a simple, fun way to make and play with technology.

The following artists participated through The Mill Contemporary Art Studios and Gallery:

[Chelsea Bradway](#), Photography
[Catherine Weber](#), Encaustic painting
[Cal Ridley](#), Painting & mixed media
[Kathleen Bryce](#), Painting
[Amy Weader](#), Unique knits
[Carol Blackwell](#), Mixed media & painting
[Barbara Trachtenberg](#), Painting
Albert Stankard, Painting
[Patrick Steele](#), Painting
[Eric Mauro](#), Stained glass & painting
[Sorin Bica](#), Contemporary painting
[Hilde-Kari Guttormsen](#), Sculpture & painting
[Project B Gallery](#)

There were artists participating from Saxonville Studios, including:

[Emily Jo Rubinfeld](#), Painter
[Cynthia Andrews](#), Painter & fine arts
[Mary Kostman](#), Painter & printmaker
[Patience Epstein](#), Painter
[Rosalie Ripadi Shane](#), Painter

[Gina Offenstine of Past Prezence](#) participated by opening the doors of her studio, offering a new kind of shopping experience with vintage furniture and one-of-a-kind interior design products. [Herb Everett](#), Gina's



husband, shared his industrial wood and pipe furniture designs. Gina Offenstine said "My Husband Herb and I were very pleased by the amount of traffic which passed through our studios both days. Many of these folks had never been in the Saxonville Mills complex and every time we chatted with someone new, it seemed they were amazed at the changes from both the outside appearance as well as impressed by the unique businesses which call Saxonville Mills their home."

Visitors were also able to view the Saxonville Precision Workshop with [Fireseed Arts](#), a group of artists who repurpose reclaimed materials into instruments, art, and furniture.

The weekend was a great chance to explore The Saxonville Mills and enjoy the art. Helping with that was Jim Parr, co-author of Framingham Legends and Lore, who gave tours of the Mills. The participants are looking forward to the next Open Studios, which will take place in November.

To stay up to date on their upcoming events, join them on [Facebook](#) or visit their [website](#).





Framingham EDIC

chooseframingham@framinghamma.gov

The Framingham Economic Development and Industrial Corporation (EDIC) was established in 1995 to stimulate economic development and expand employment opportunities in the Town of Framingham in accordance with the town's approved economic development plans.

STAY CONNECTED

